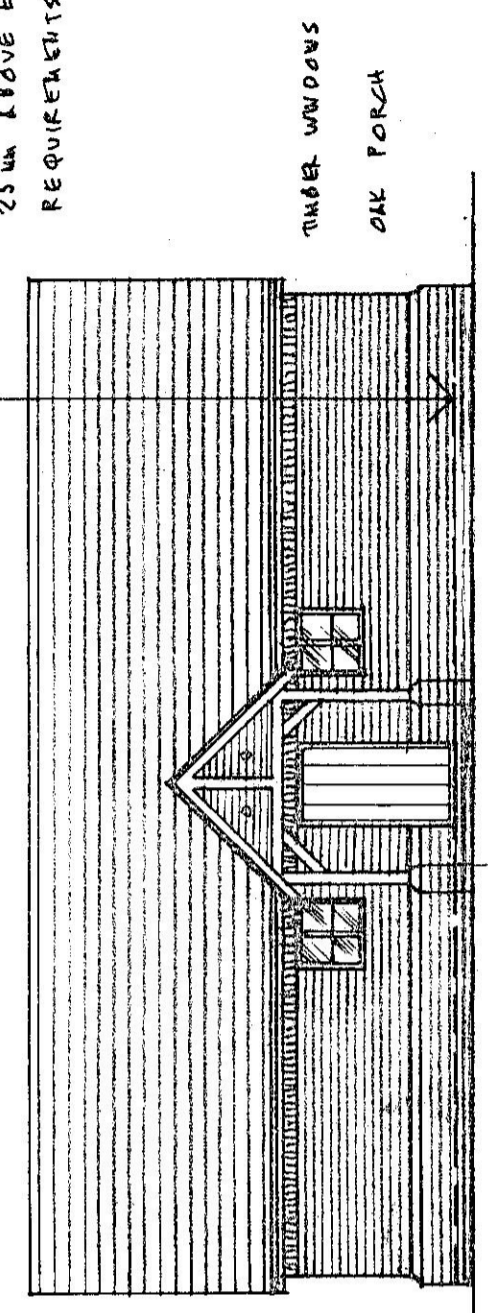


EAST

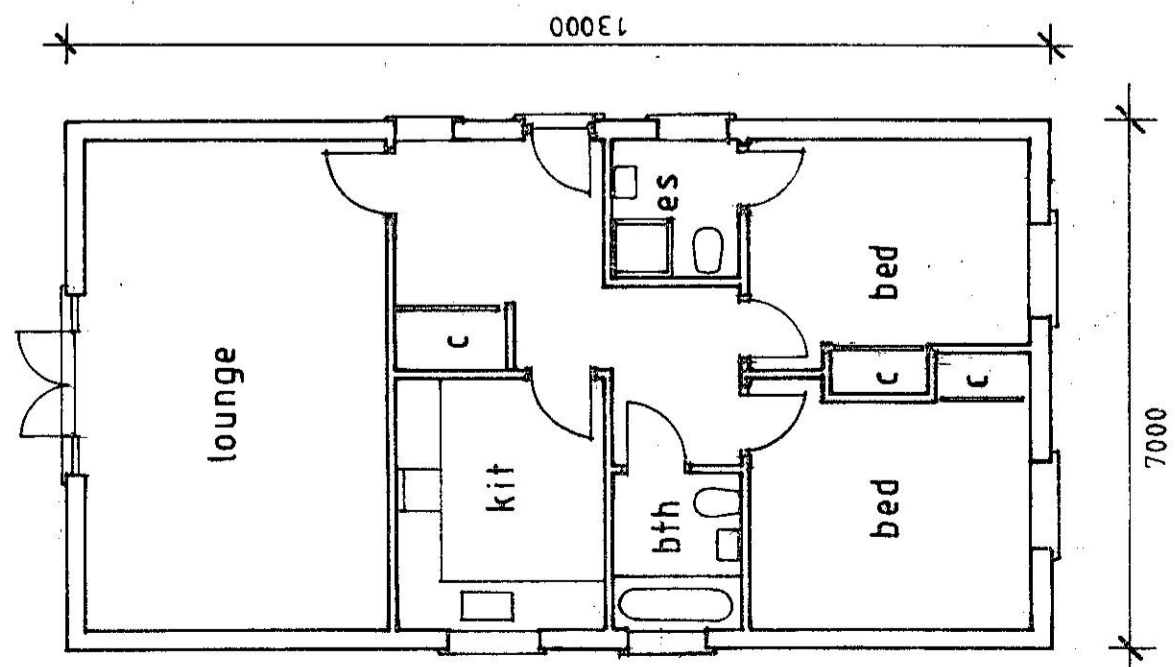
SOUTH

DASHED LINE INDICATES  
DPC / FINISHED FLOOR  
LEVEL 225MM ABOVE  
EXTERNAL GROUND LEVEL.  
25MM ABOVE E.A.  
REQUIREMENTS.



WEST

NORTH



FLOOR PLAN 1:100

81.25m<sup>2</sup>

REV C: NOV 9 '12: FEL/PPC  
CLARIFIED.  
REV D: OCT 26 '12: HEIGHT TO  
RIDGE REZONICISED TO 5800MM  
REV A: SET '12: BIGGER PORCH,  
WINDOWS MADE SQUARE.  
ALL FOLLOWING A DISCUSSION WITH  
L.M.PAGE, PLANNING OFFICER.

**WILLIAMS DESIGN**  
66 Nutfield Road Rowhams Southampton  
Hampshire SO16 8JN Tel 02380741500

Project  
**PROPOSED DWELLING  
LAND TO REAR OF 'VIVAS'**  
Title  
**PLANS AND ELEVATIONS**